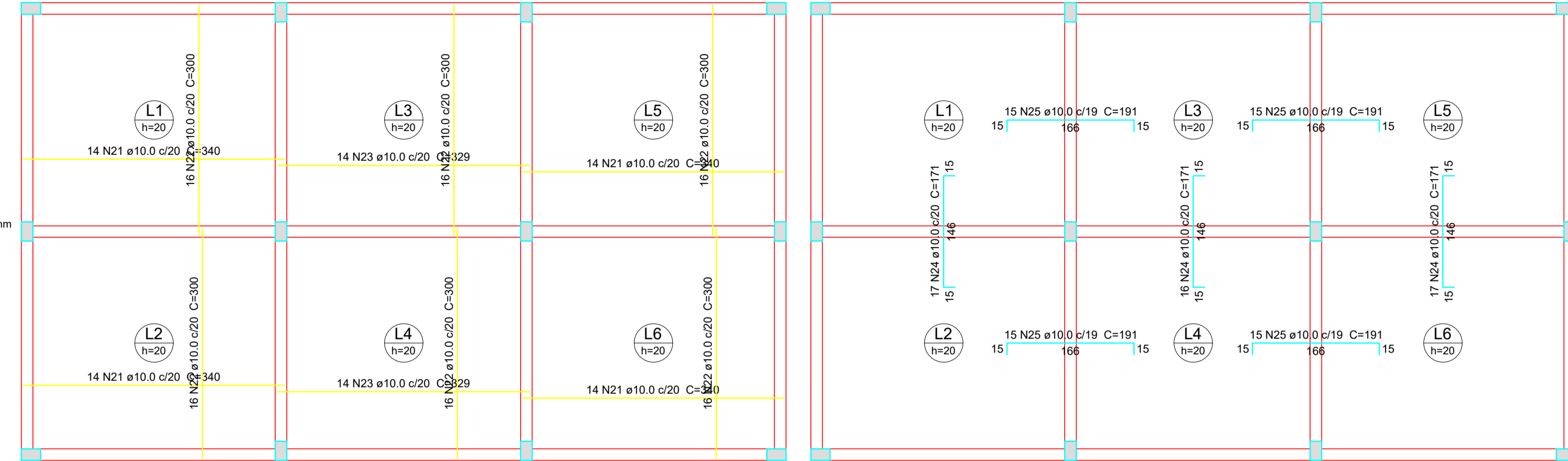


Forma do pavimento 1  
escala 1:50

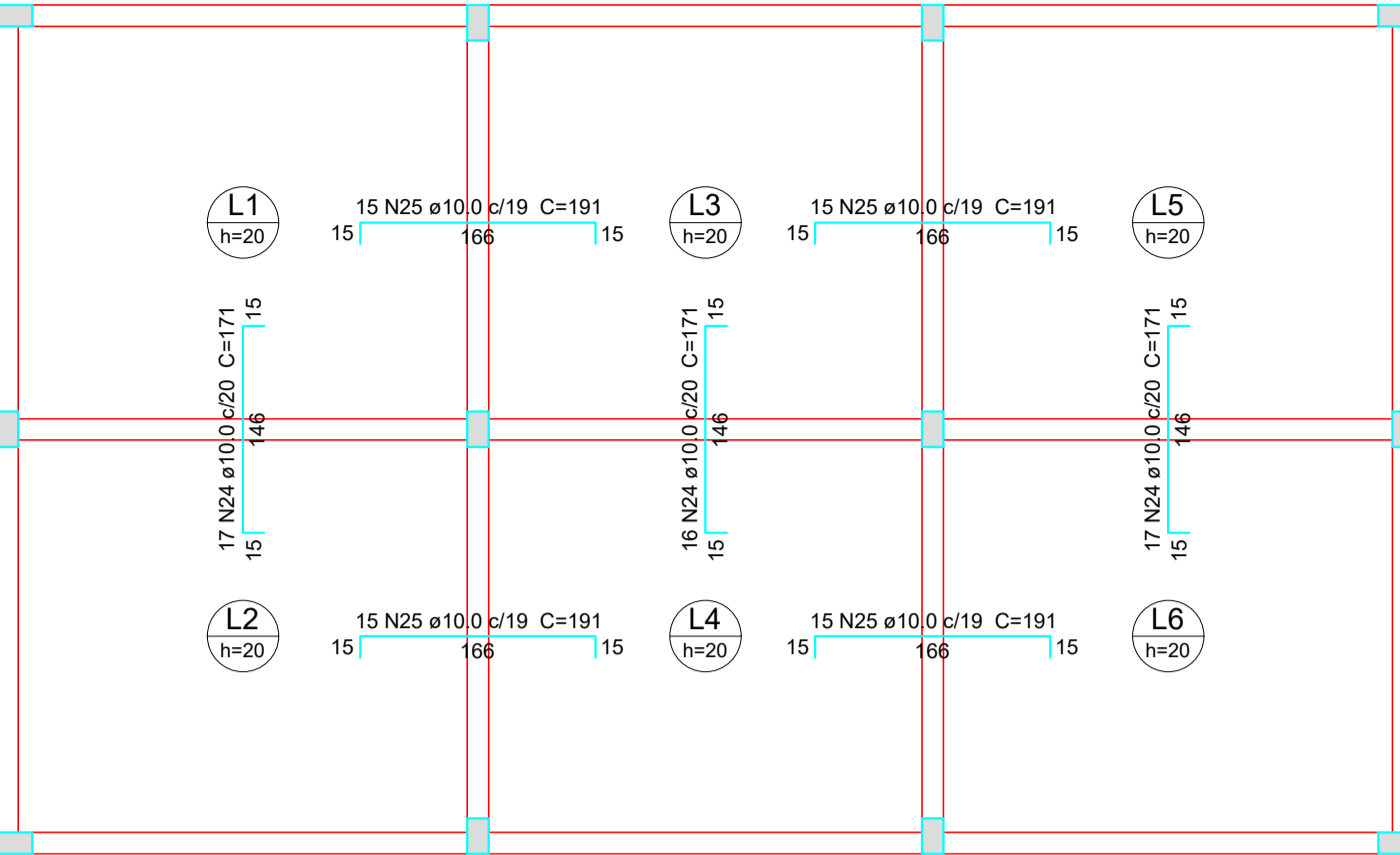
Nome	Seção (cm)	Elevação (cm)	Nível (cm)
V1	15x50	-5	-5
V2	15x50	-5	-5
V3	15x50	-5	-5
V4	15x50	-5	-5
V5	15x50	-5	-5
V6	15x50	-5	-5
V7	15x50	-5	-5

Características dos materiais		
f <sub>cd</sub> (kgf/cm <sup>2</sup> )	E <sub>s</sub> (kgf/cm <sup>2</sup> )	ρ (kg/m <sup>3</sup> )
250	238000	2400

Dimensão máxima do agregado = 19 mm



Armação positiva das lajes do pavimento 1  
escala 1:50



Armação negativa das lajes do pavimento 1  
escala 1:50

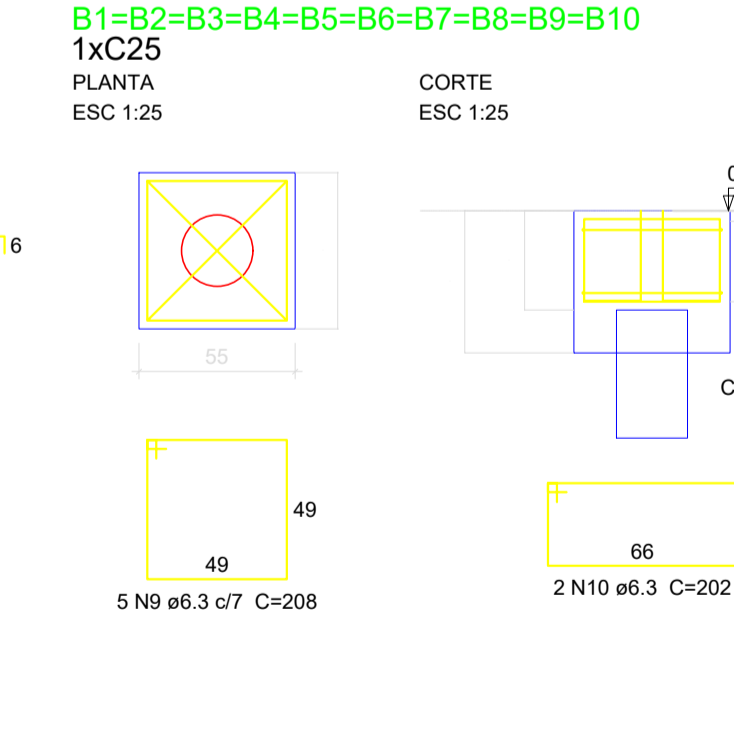
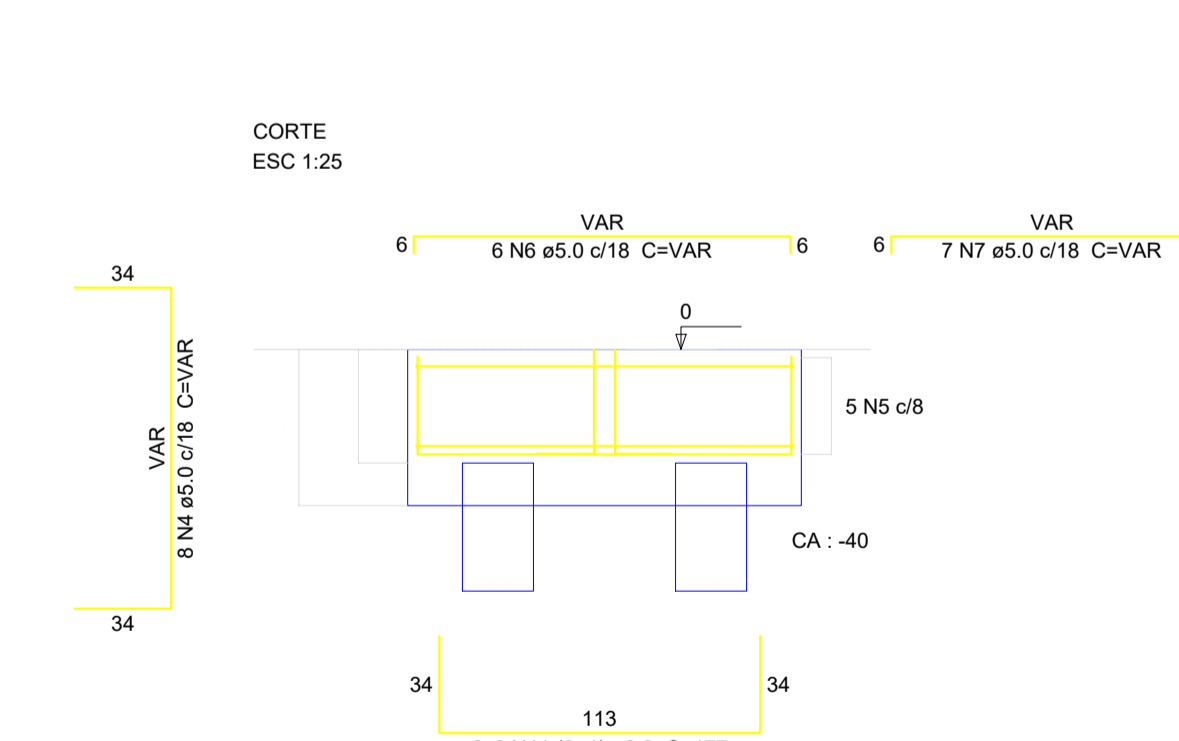
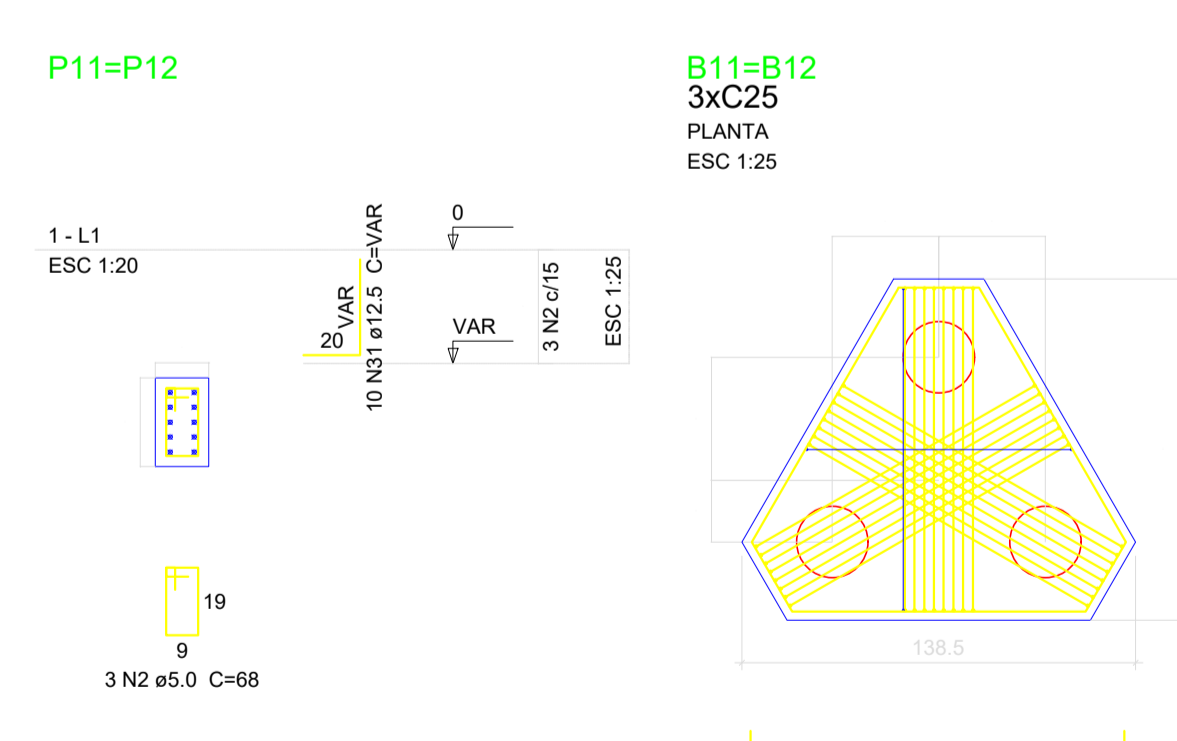
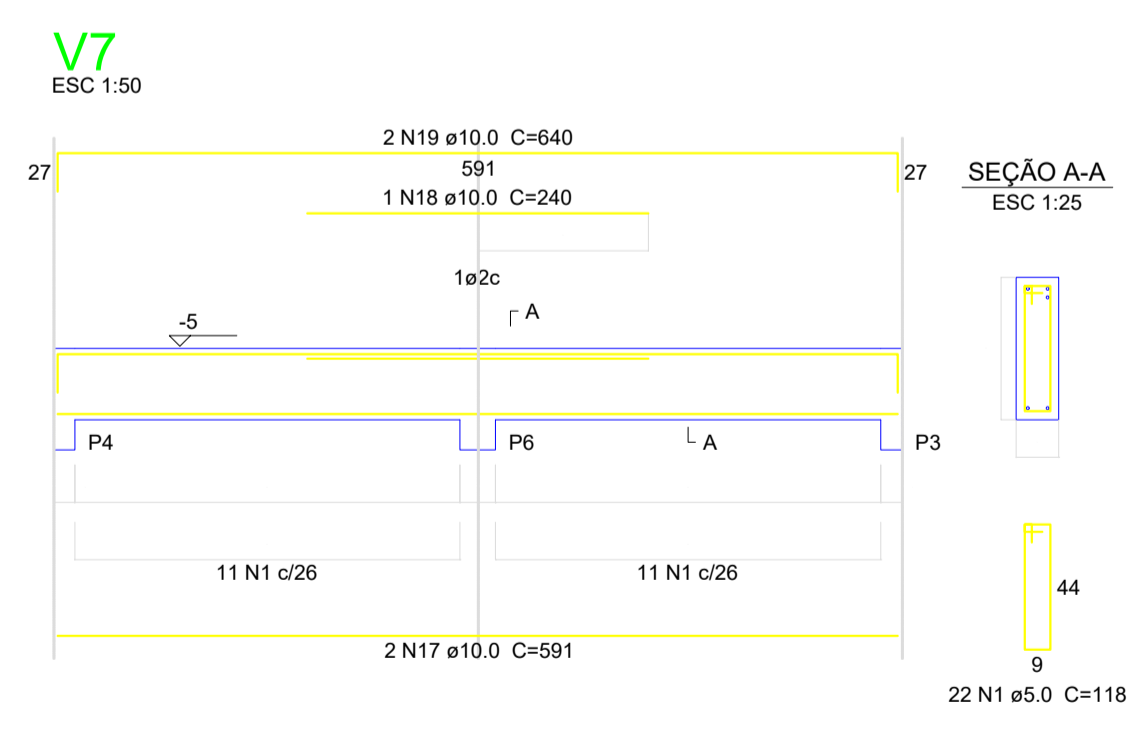
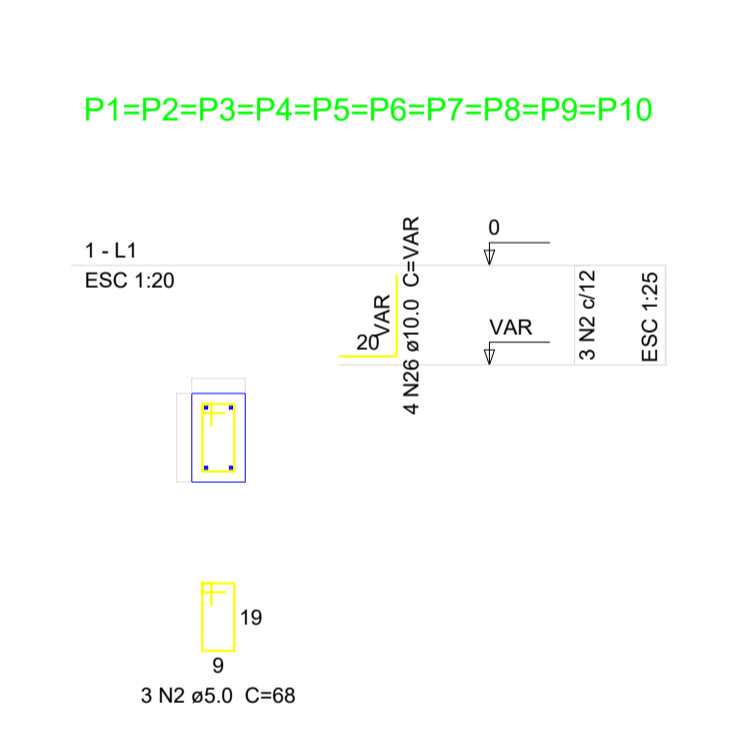
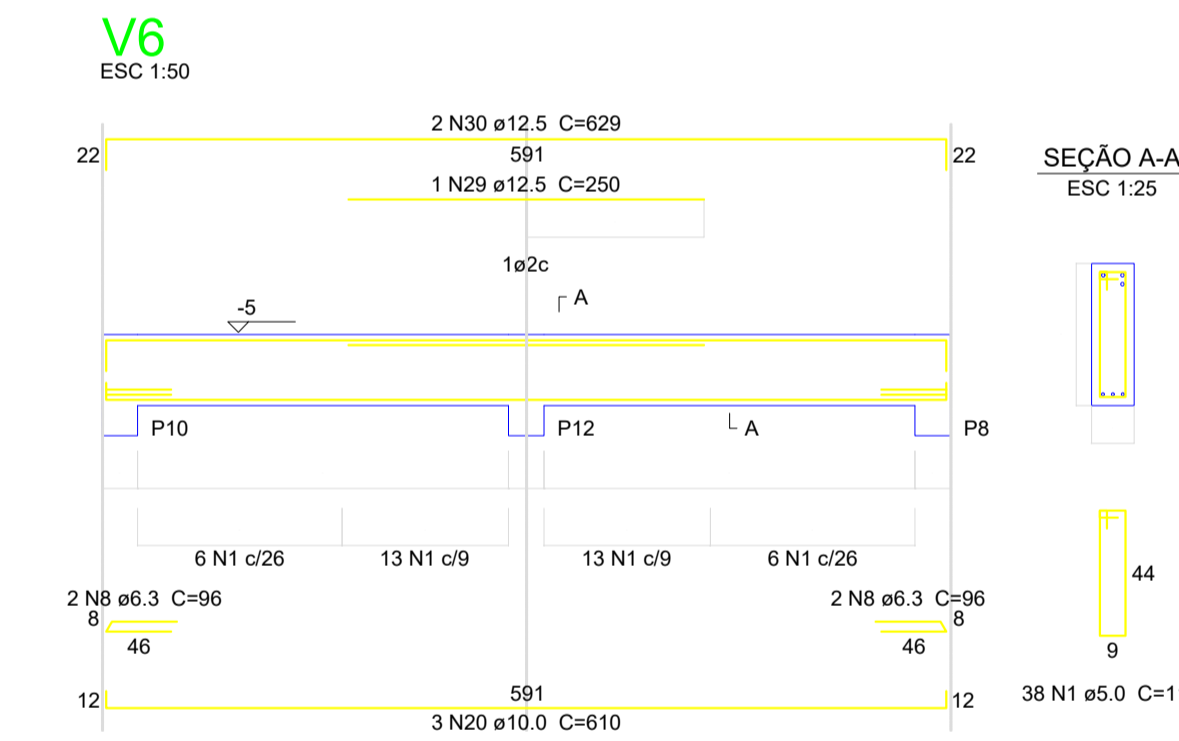
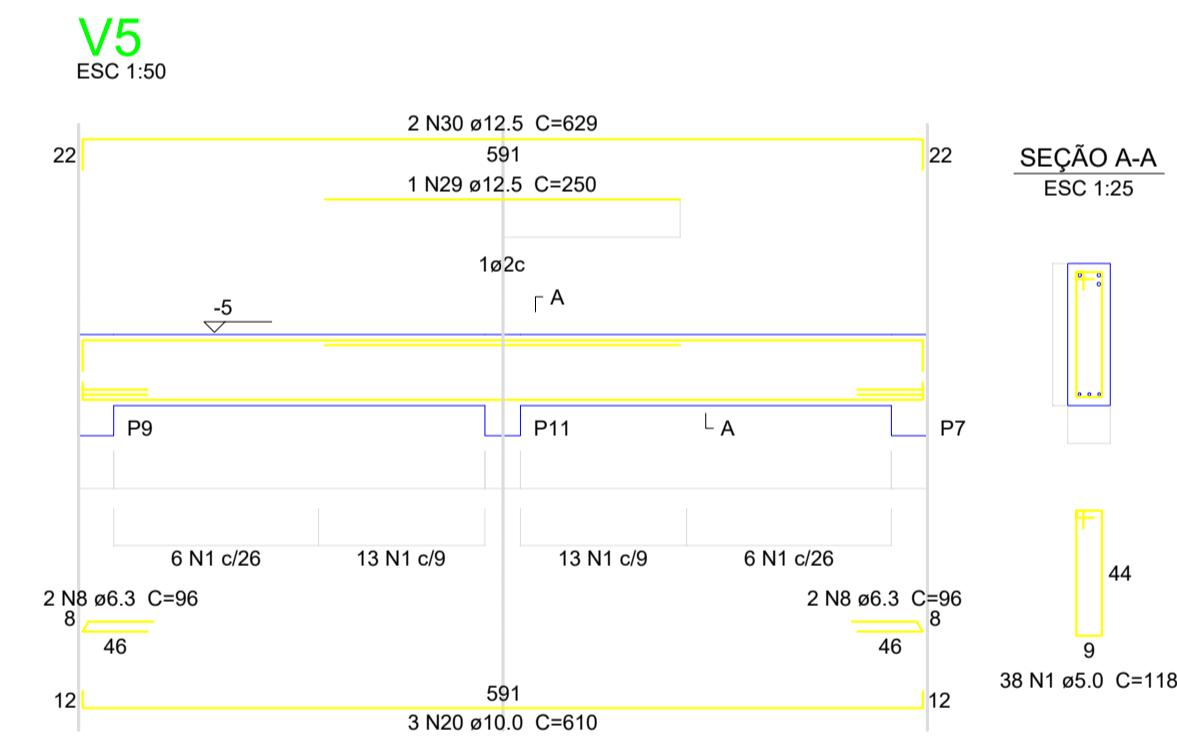
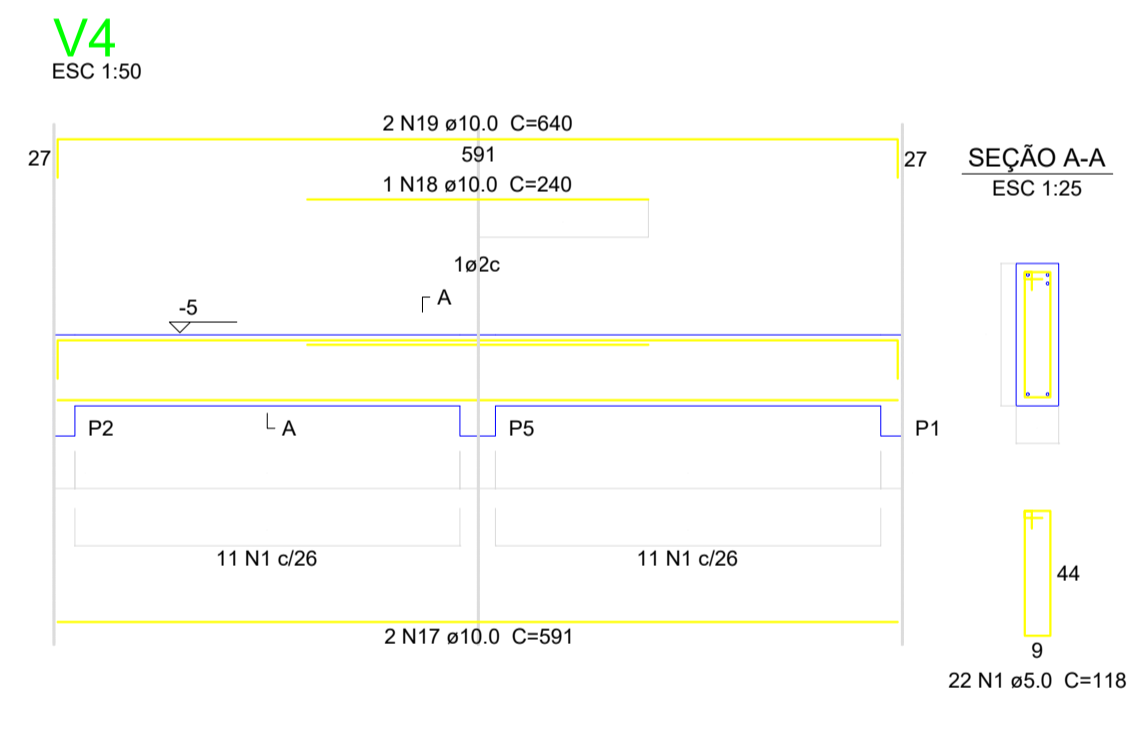
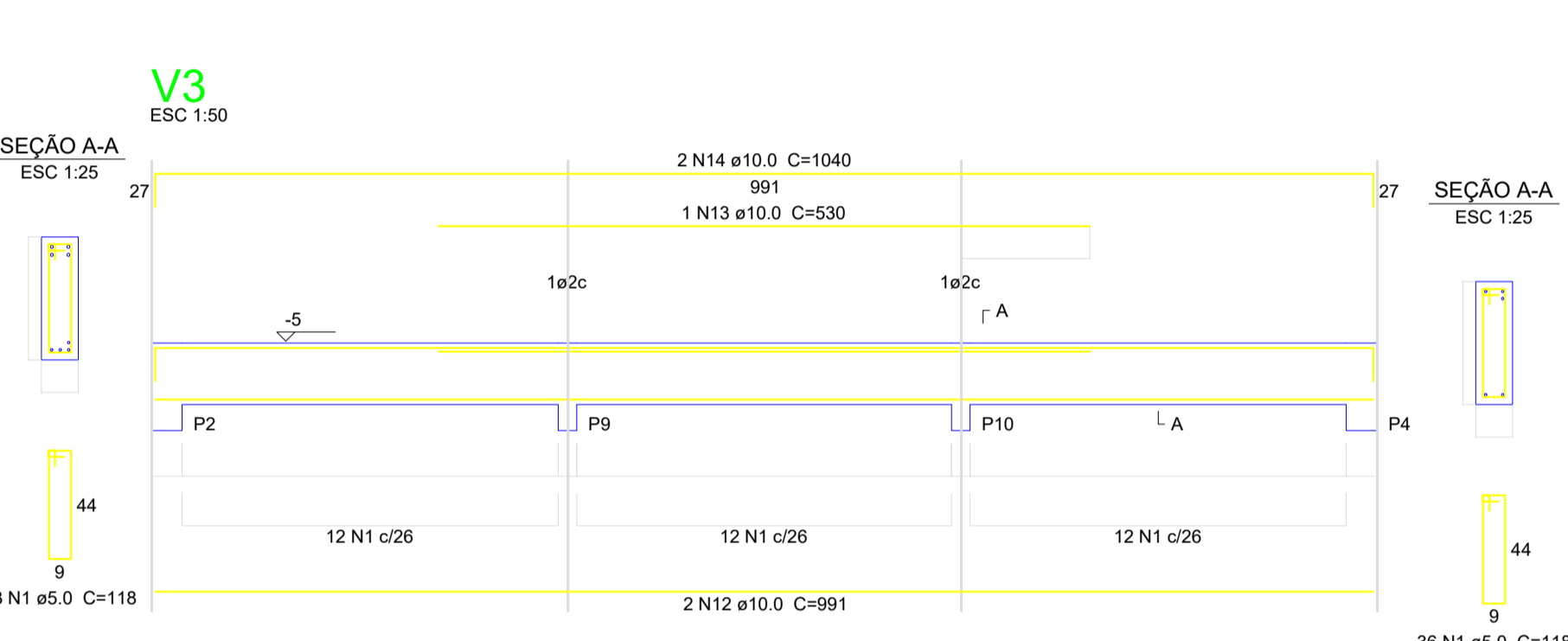
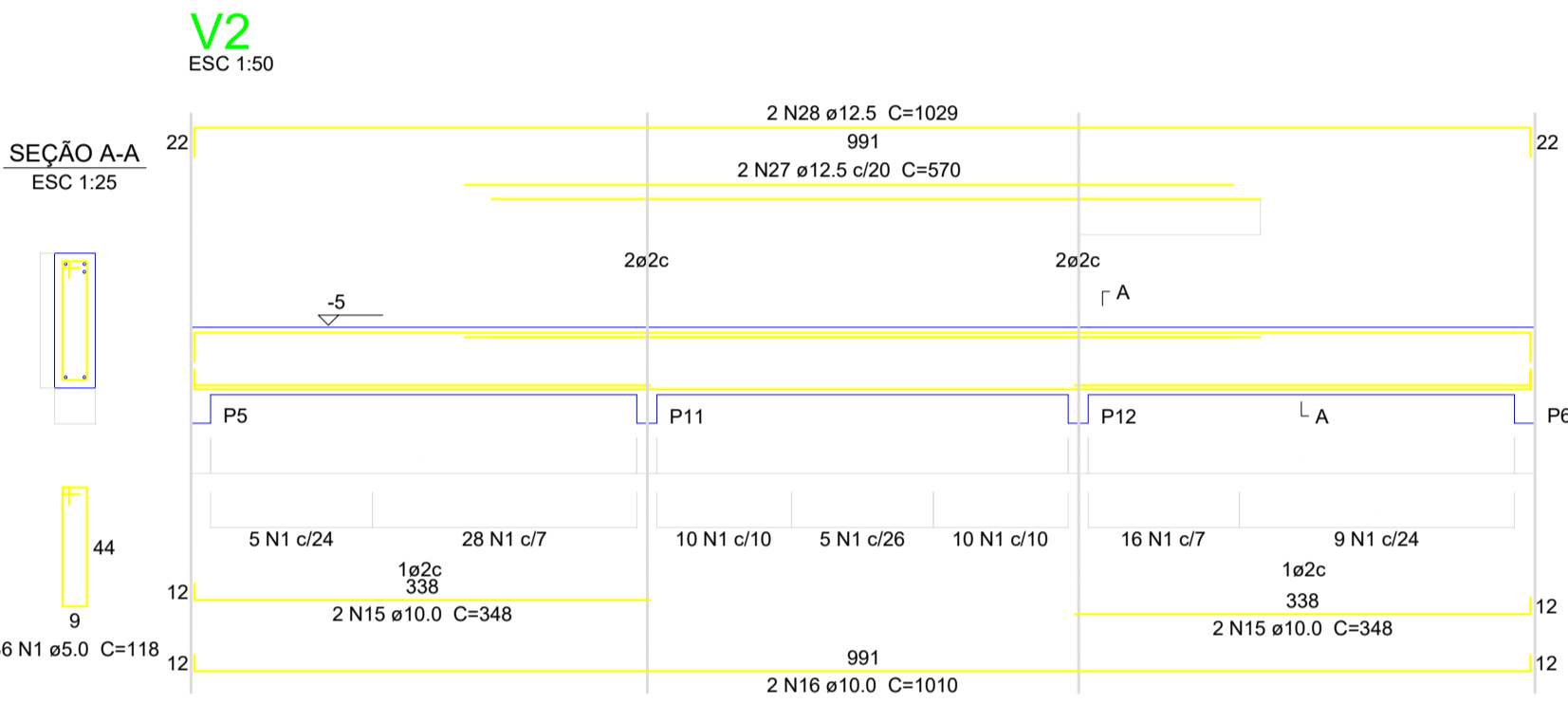
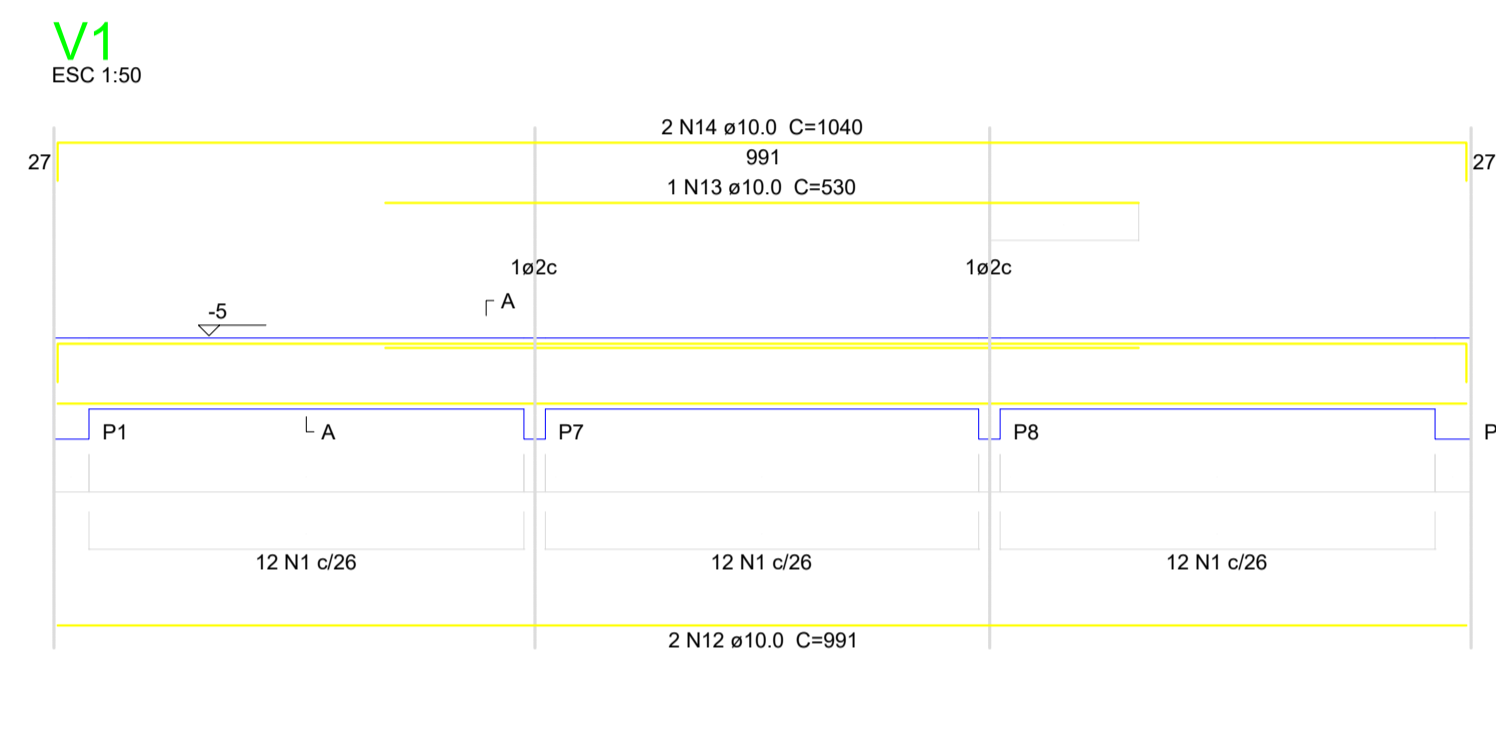
### Relação do aço

AÇO	N	DIAM (mm)	QUANT (Barras)	UNIT (cm)	C.TOTAL (cm)	Negativos	
						V2	V5
10x810							
Positivos							
V3							
V6							
CA60	1	5.0	275	118	32450		
	2	5.0	36	68	2448		
	3	5.0	14	VAR	VAR		
	4	5.0	16	VAR	VAR		
	5	5.0	10	405	4050		
	6	5.0	12	VAR	VAR		
	7	5.0	14	VAR	VAR		
CA50	8	6.3	8	96	768		
	9	6.3	50	208	10400		
	10	6.3	20	202	4040		
	11	8.0	54	177	9558		
	12	10.0	4	991	3964		
	13	10.0	2	530	1090		
	14	10.0	4	1040	4160		
	15	10.0	4	348	1392		
	16	10.0	2	1010	2020		
	17	10.0	4	591	2364		
	18	10.0	2	240	480		
	19	10.0	4	540	2560		
	20	10.0	6	610	3660		
	21	10.0	56	340	19040		
	22	10.0	96	300	28800		
	23	10.0	28	329	9212		
	24	10.0	50	171	8550		
	25	10.0	60	191	11460		
	26	10.0	40	VAR	VAR		
	27	12.5	2	570	1140		
	28	12.5	2	1029	2058		
	29	12.5	2	250	500		
	30	12.5	4	629	2516		
	31	12.5	20	VAR	VAR		

### Resumo do aço

AÇO	DIAM (mm)	C.TOTAL (m)	PESO (kg)
CA50	6.3	152.1	37.2
	8.0	95.6	37.7
	10.0	1006.1	620.2
	12.5	72.4	69.7
CA60	5.0	480.3	74
PESO TOTAL (kg)			764.9
CA50			764.9
CA60			74

Volume de concreto (C-25) = 17.18 m<sup>3</sup>  
Área de forma = 132.64 m<sup>2</sup>



CARIMBOS:

Revisões da prancha

Nº	Comentário	Autor	Data

**PROJETO ESTRUTURAL**

OBRA: **CONSTRUÇÃO DE BASE PARA ETA**

ENDEREÇO:

RESPONSÁVEL TÉCNICO: Engº Civil Mário César Alexandre Júnior CREA: 119.087-1

FRANCHA: Planta de Formas, dimensionamento de elementos

PAVIMENTO: Térreo ÁREA A CONSTRUIR: 60,00 m<sup>2</sup> CONJUNTO: **EST.**

PROPRIETÁRIO: IFC - Rio do Sul CPF: FOLHA:

DESENHO: Mário C. Alexandre Jr. DATA: MARÇO 2022 FOLHA: **1/1**