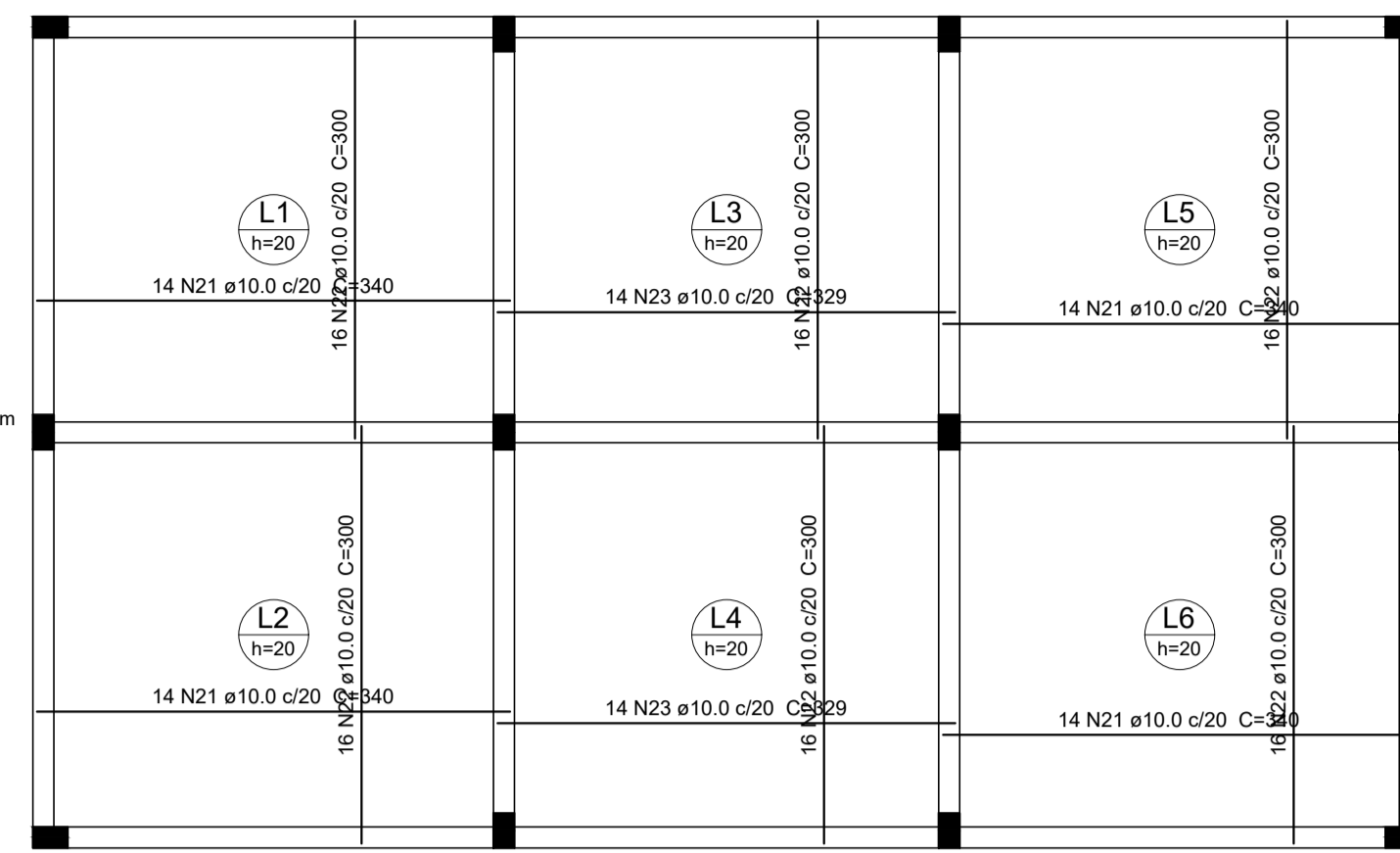


Forma do pavimento 1
escala 1:50

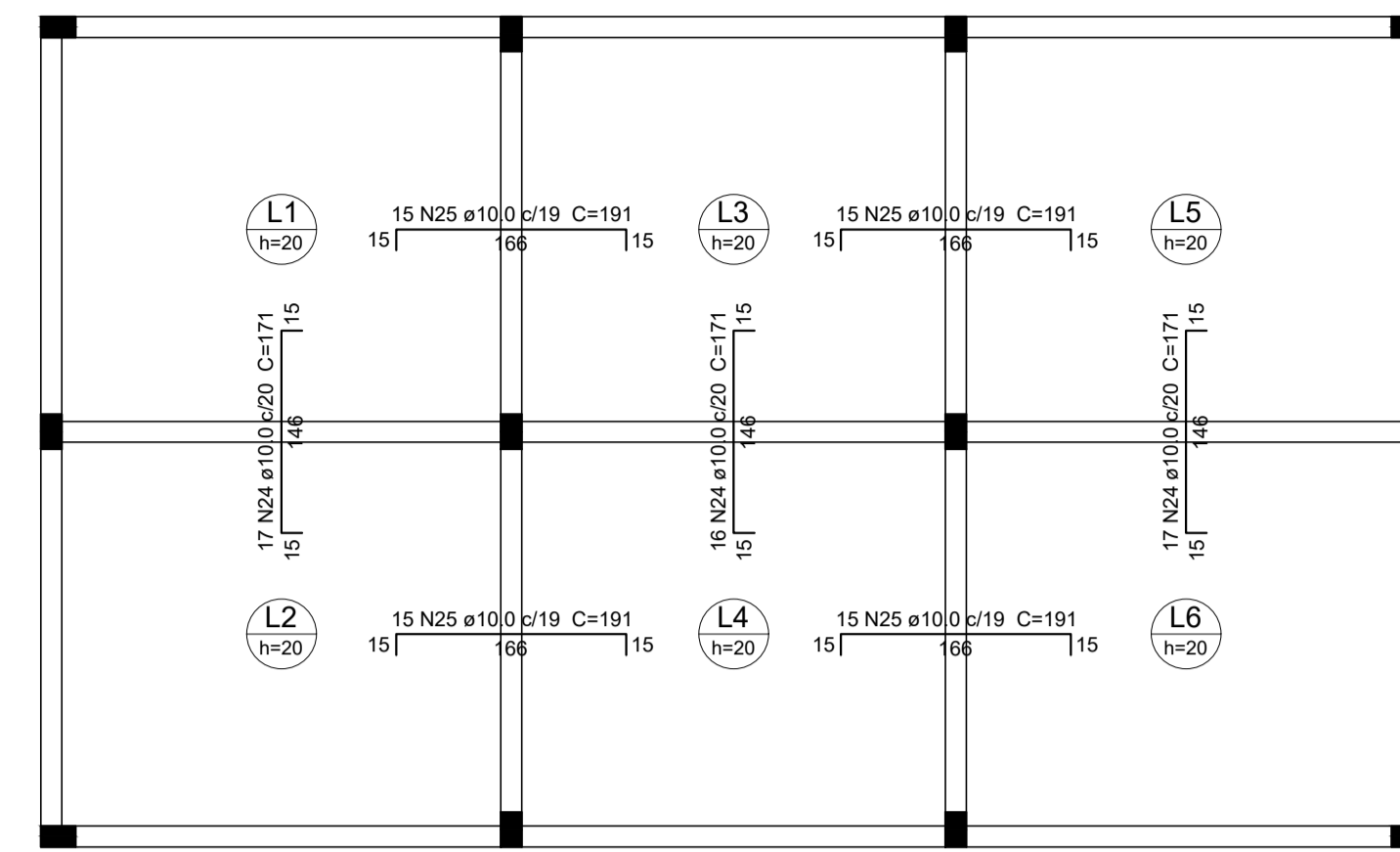
Nome	Seção	Elevação (cm)	Nível (cm)
V1	15x50	-5	-5
V2	15x50	-5	-5
V3	15x50	-5	-5
V4	15x50	-5	-5
V5	15x50	-5	-5
V6	15x50	-5	-5
V7	15x50	-5	-5

Características dos materiais		
f _{ck} (kgf/cm ²)	E _s (kgf/cm ²)	
250	238000	

Dimensão máxima do agregado = 19 mm



Armação positiva das lajes do pavimento 1
escala 1:50

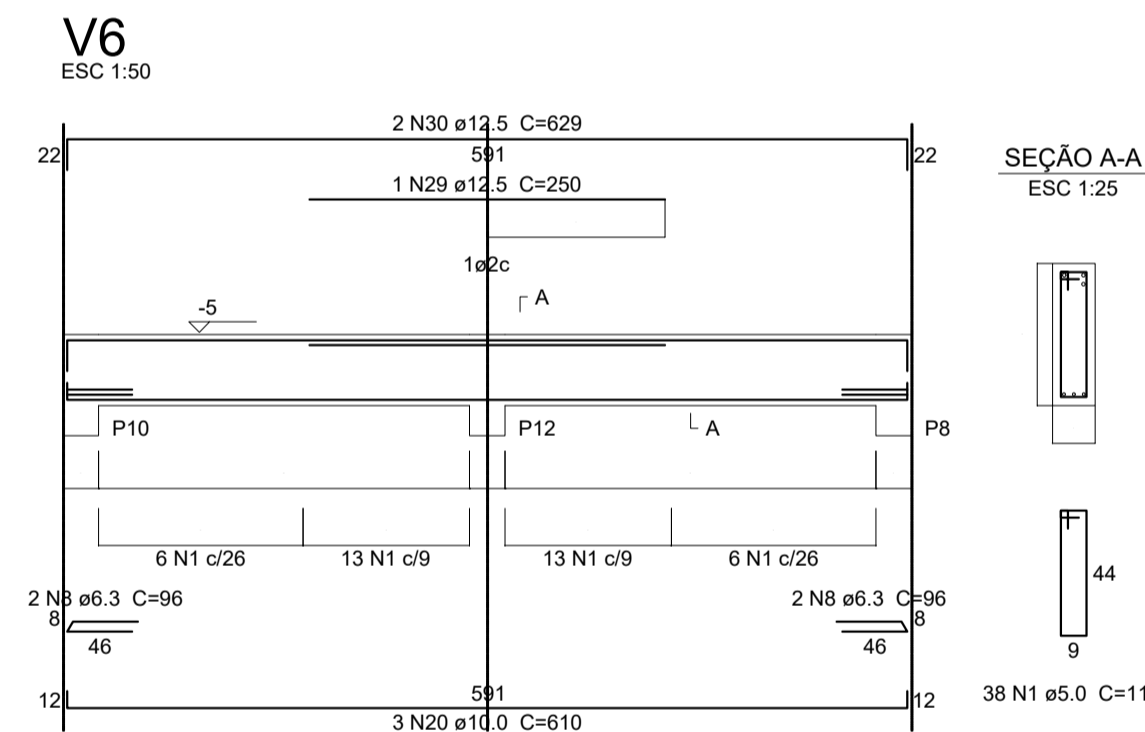
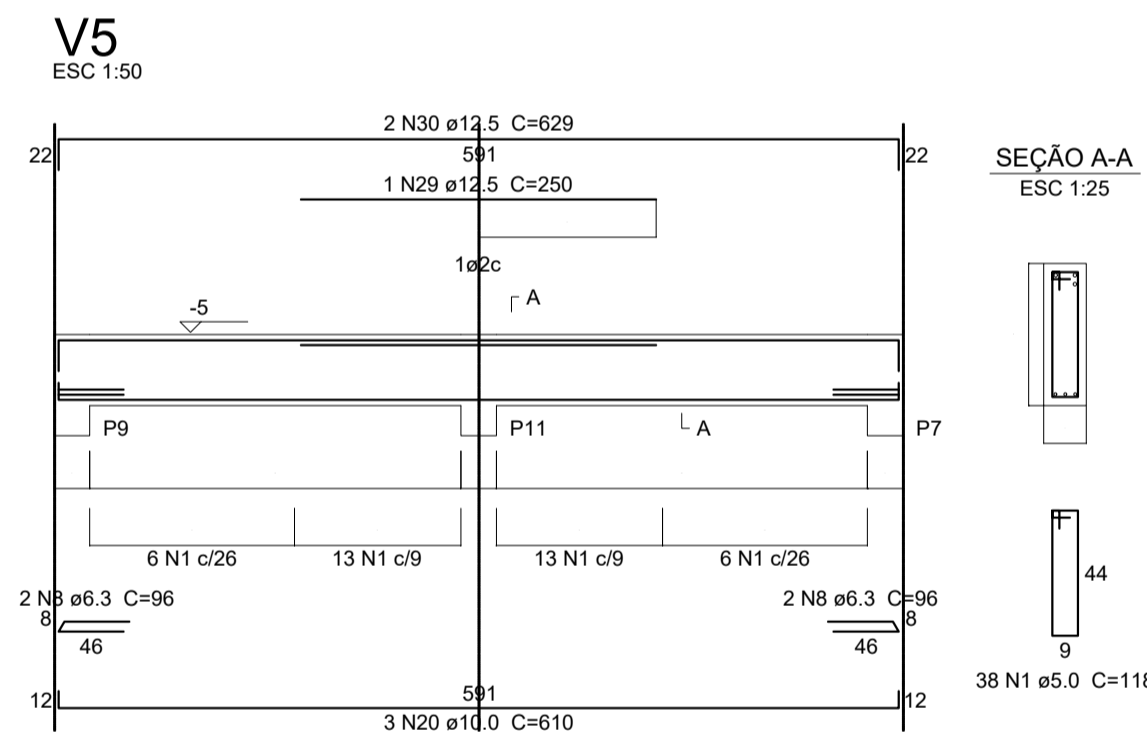
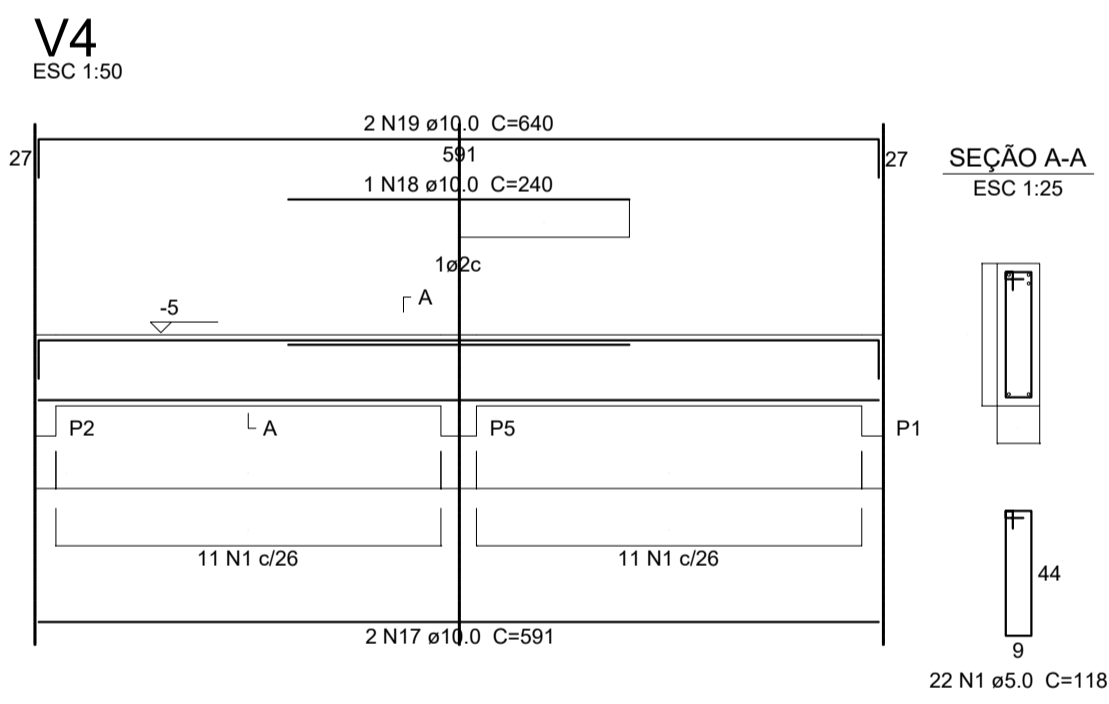
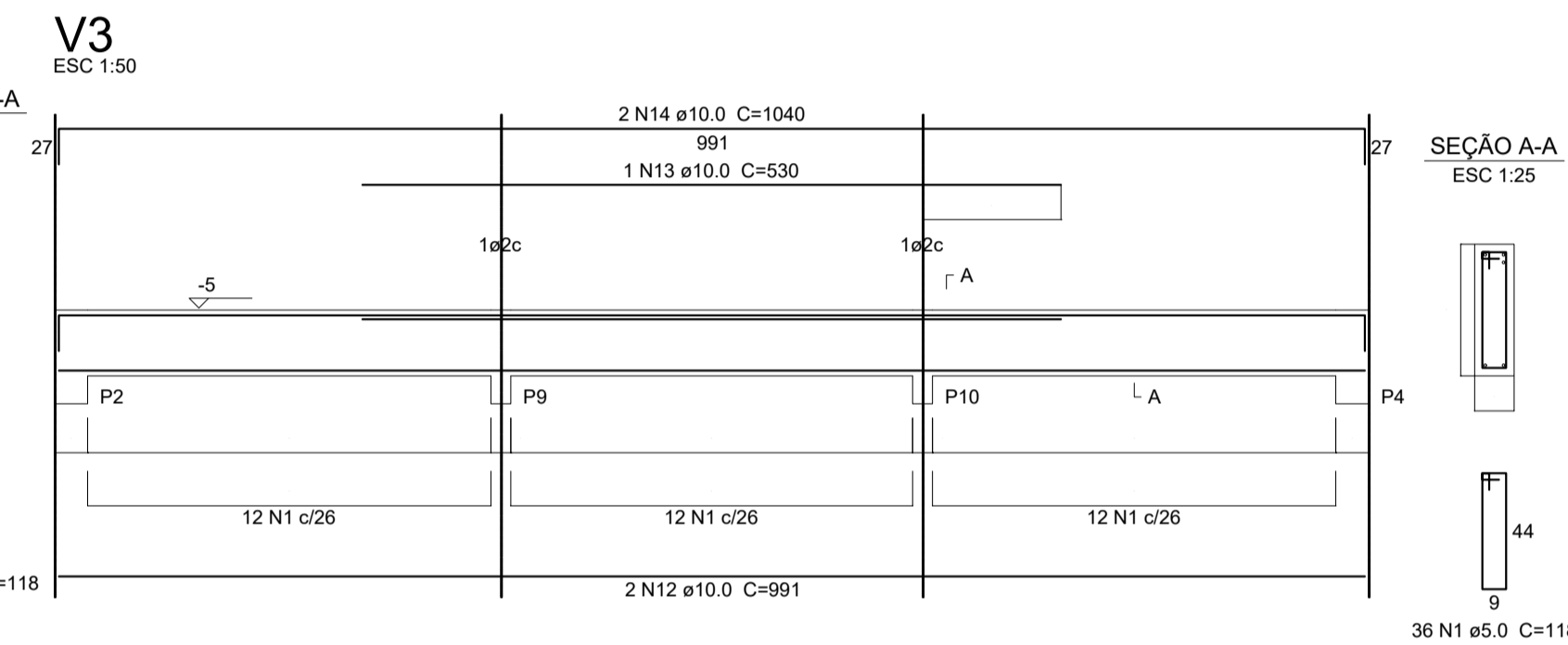
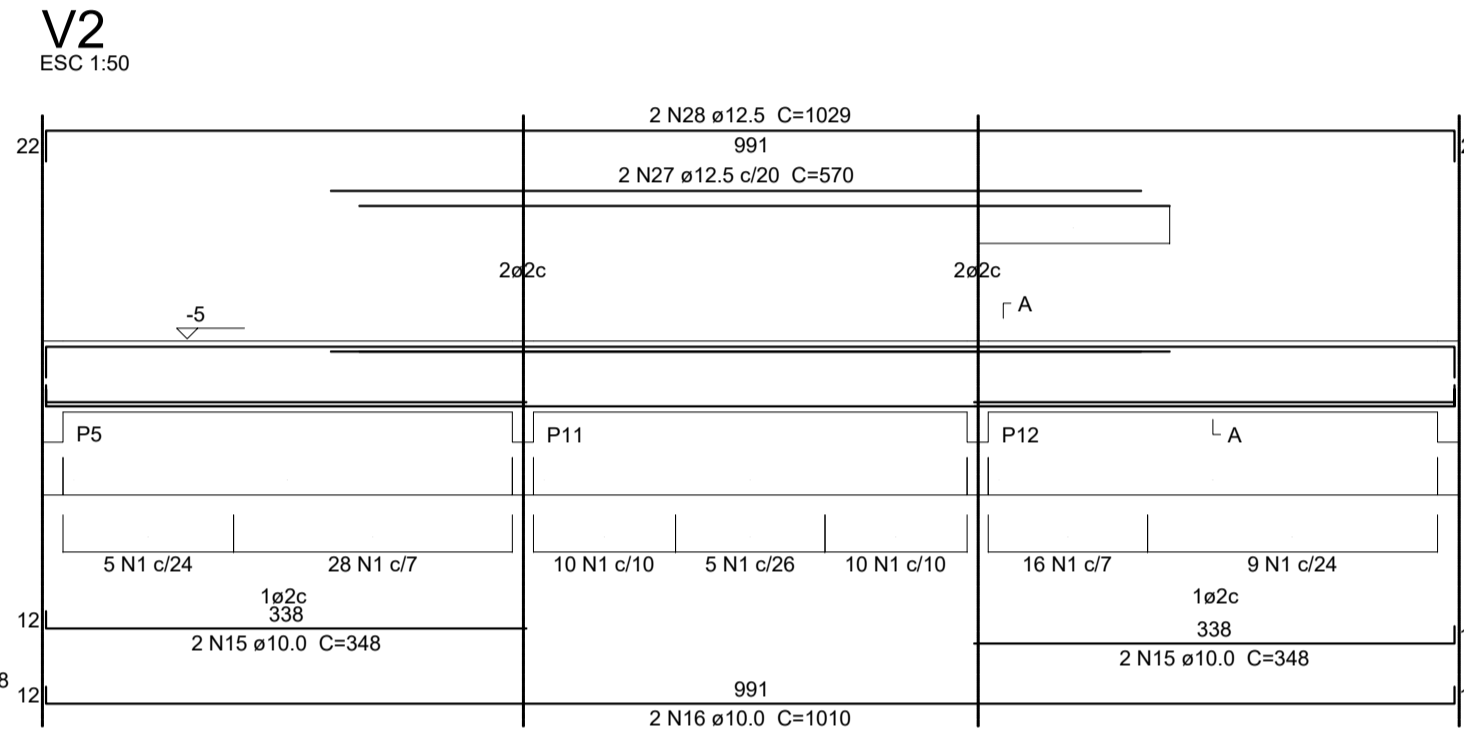
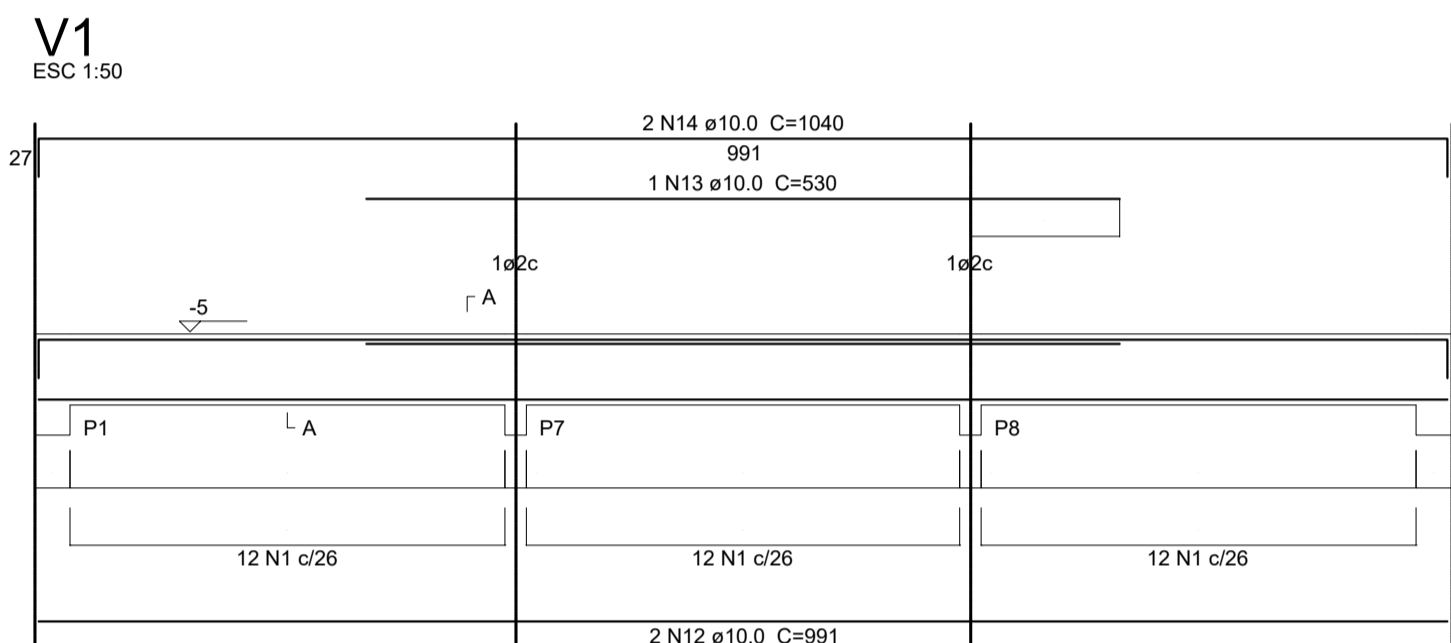


Armação negativa das lajes do pavimento 1
escala 1:50

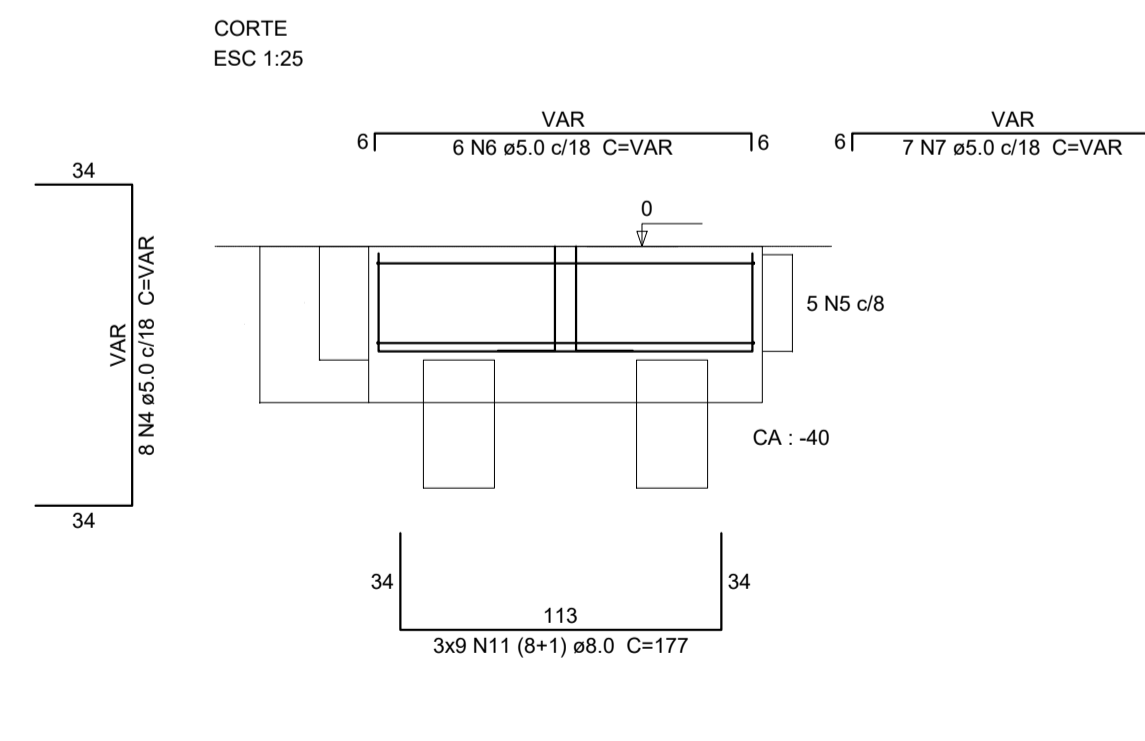
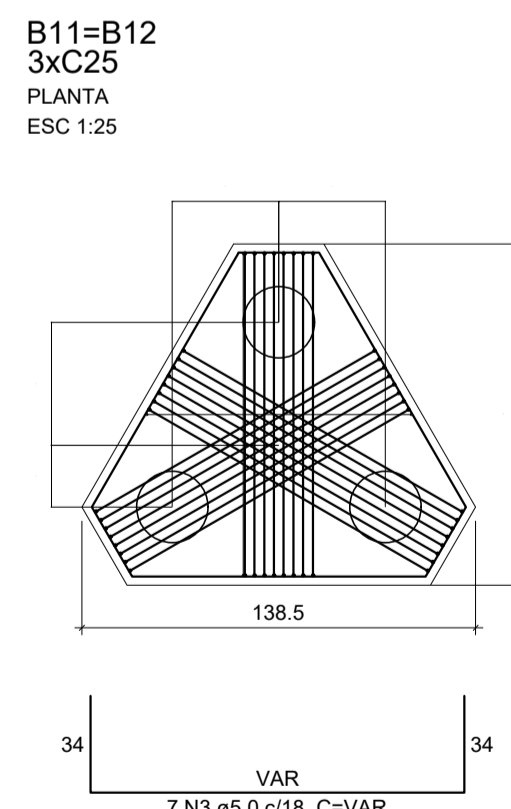
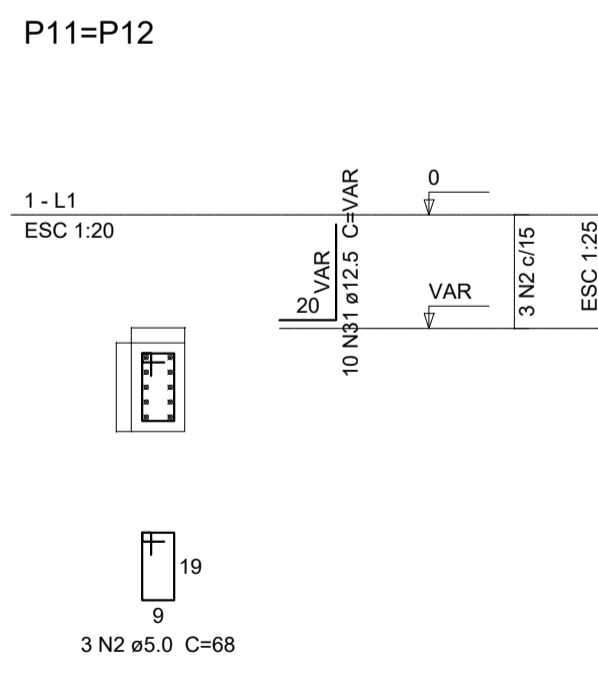
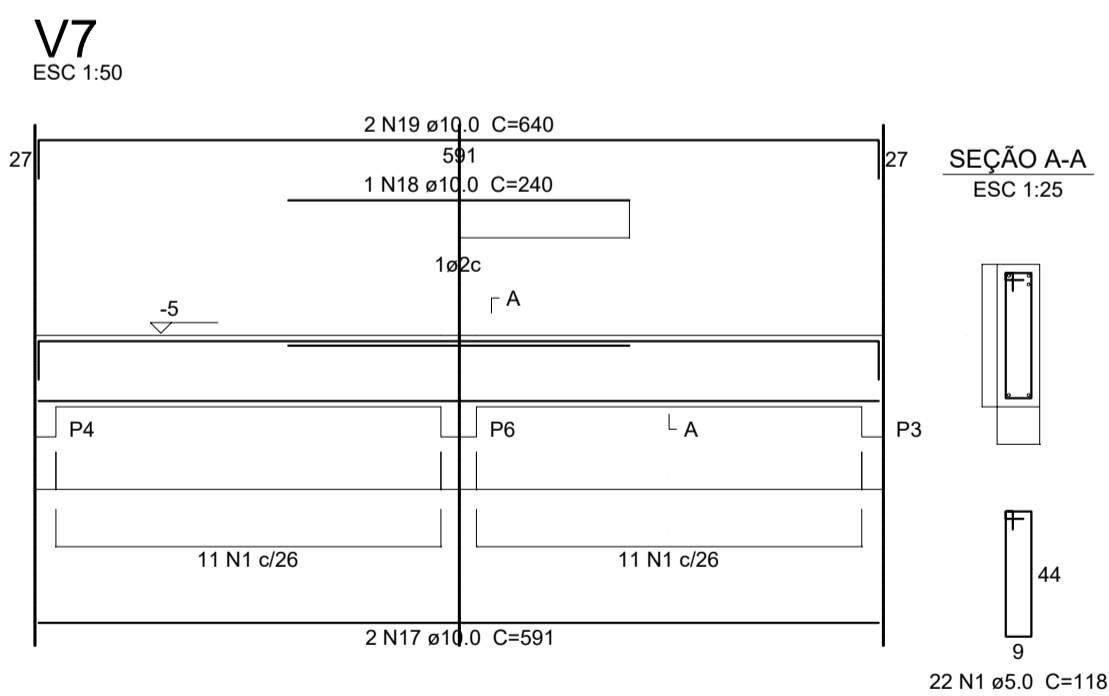
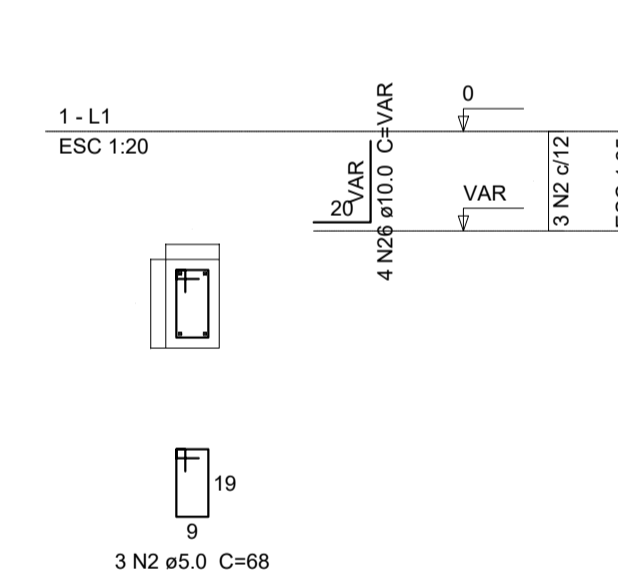
Relação do aço					
ACO	N	DIAM (mm)	QUANT (Barras)	UNIT (cm)	C.TOTAL
					(cm)
CA60	1	5.0	275	118	32450
	2	5.0	36	68	2448
	3	5.0	14	VAR	VAR
	4	5.0	16	VAR	VAR
	5	5.0	10	405	4050
	6	5.0	12	VAR	VAR
	7	5.0	14	VAR	VAR
	8	6.3	8	96	768
	9	6.3	50	208	10400
	10	6.3	20	202	4040
	11	8.0	54	177	9558
	12	10.0	4	991	3964
13	10.0	2	530	1060	
14	10.0	4	1040	4160	
15	10.0	4	348	1392	
16	10.0	2	1010	2020	
17	10.0	4	591	2364	
18	10.0	2	240	480	
19	10.0	4	540	2160	
20	10.0	6	610	3660	
21	10.0	56	340	19040	
22	10.0	96	300	28800	
23	10.0	28	329	9212	
24	10.0	50	171	8550	
25	10.0	60	191	11460	
26	10.0	40	VAR	VAR	
27	12.5	2	570	1140	
28	12.5	2	1029	2058	
29	12.5	2	250	500	
30	12.5	4	629	2516	
31	12.5	20	VAR	VAR	

Resumo do aço			
ACO	DIAM (mm)	C.TOTAL (m)	PESO (kg)
CA50	6.3	152.1	37.2
CA50	8.0	95.6	37.7
CA50	10.0	1006.1	620.2
CA50	12.5	72.4	69.7
CA60	5.0	480.3	74
PESO TOTAL (kg)			
CA50		764.9	
CA60		74	

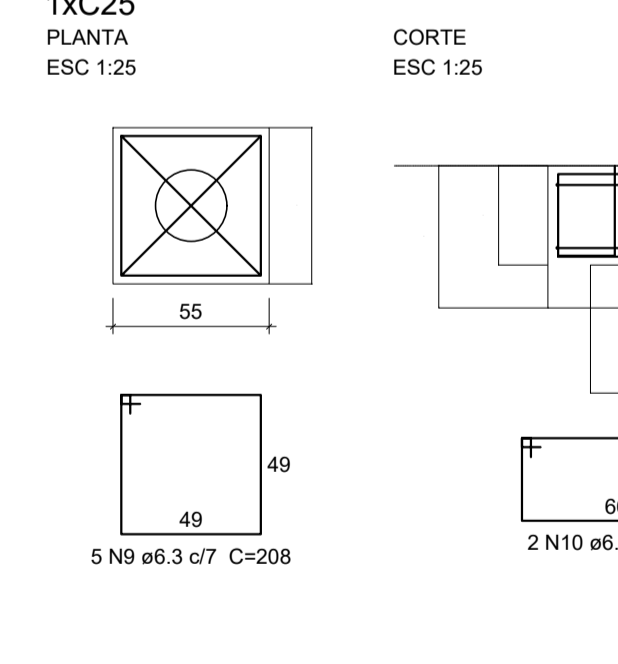
Volume de concreto (C-25) = 17.18 m³
Área de forma = 132.64 m²



P1=P2=P3=P4=P5=P6=P7=P8=P9=P10



B1=B2=B3=B4=B5=B6=B7=B8=B9=B10



CARIMBOS:

Área Terreno: Área a Construir: Área Existente: Área Total: Taxa de Ocupação: Índice de Aproveitamento: Testada do Lote:

Revisões da prancha

N°	Comentário	Autor	Data

PROJETO ESTRUTURAL

OBRA: **CONSTRUÇÃO DE BASE PARA ETA**

ENDEREÇO: _____

RESPONSÁVEL TÉCNICO: Eng° Civil Mário César Alexandre Júnior CREA: 119.087-1

FRANCHA: Planta de Formas, dimensionamento de elementos

PAVIMENTO: Térreo ÁREA A CONSTRUIR: 60,00 m² CONJUNTO: **EST.**

PROPRIETÁRIO: IFC - Rio do Sul CPF: _____ FOLHA: _____

DESENHO: Mário C. Alexandre Jr. DATA: MARÇO 2022 FOLHA: **1 / 1**